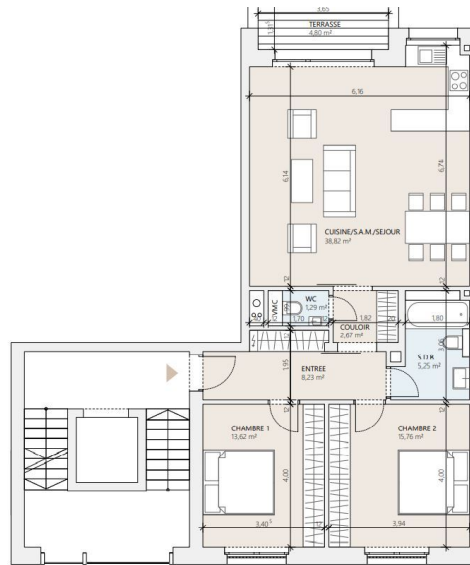


85,64 m² surface habitable	
2 chambres 1 terrasse	
◊ ENTREE	8,23 m ²
◊ CHAMBRE 1	13,62 m ²
◊ CHAMBRE 2	15,76 m ²
◊ SALLE DE BAIN	5,25 m ²
◊ COULOIR	2,67 m ²
◊ WC	1,29 m ²
◊ CUISINE/S.A.M./SEJOUR	38,82 m ²
TERRASSE	4,80 m ²

ETA 1



DESCRIPTION OF THE PROPERTY

HD33 Real Estate Luxembourg offers you this magnificent 2-bedroom VEFA apartment in Moutfort, in a green setting in the quiet countryside. CONTACT & VISIT : CONTACT@HD33.LU Alban Huyghé : +352661705033 Apartment A4 Lot 15 is located on the 1st floor of the "West Valley" residence, with a surface area of approximately 85.64 m², distributed as follows:- 8.23 m² entrance hall;- An open-plan kitchen opening onto a 38.82 m² living room with access to a 4.80 m² south-west-facing terrace;- A 13.62 m² bedroom;- A second bedroom of approx. 15.76 m² ;- A separate bathroom of approx. 5.25 m² ;- Corridor approx. 2.67 m² ;- Separate WC approx. 1.29 m² ;In the basement of the residence, there are two stroller rooms (approx. 2.47 m² and 3.14 m²), two bicycle rooms (approx. 14.07 m² and 11.98 m²) and two storage rooms (approx. 2.63 m²). The residence has an elevator, and the property for sale is completed by a private cellar and a shared laundry room, The sale price includes 1 indoor and 1 outdoor par...

SPECIFICATIONS

Number of pieces : -
Nb. of bedroom(s) : 2
Area : 85.64m²
Number of bathrooms : -
Equipped kitchen : Non

✓ **Huyghe - Dubois Sàrl**

📍 **53, Boulevard Royal - 2nd Floor 2449**

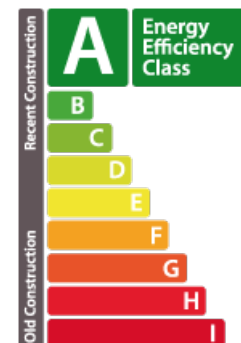
📞 **284 825 086**

✉ **contact@hd33.lu**

🌐 **<https://www.hd33.lu/en/detail-331>**

ENERGY PASS

Energy performance



Thermal insulation

